



P9 Switches

Sealed Dome Pushbutton Switches

In STOCK NOW

No MOQ's



The P9 Domed series switches feature a contoured pushbutton in a tough plastic housing. Two versions are available; a low button profile and a raised button profile, with a threaded case for hex nut mounting or with snap-in case*. Offering excellent mechanical & electrical performance while operating under severe conditions found in demanding applications.

The P9 Dome series is offered in dust tight and moisture proof sealed construction, offering one million mechanical operations and an electrical life of 250,000 operations at full rated load of 5 amps resistive or 3 amps inductive. Watertight sealing to IP68S is also available.

Available in standard and low force double break snap-action and non-snap shorting bar models. All are momentary action. High contact pressure and unique contact design provide low contact resistance for low level switching capability as well as full rated service. Solder, PC Pin and 0.110" Quick Connect termination options are available.

The P9 Dome series is a quality precision switch designed for use in panels, control grips, computers, instruments, heavy equipment and other demanding applications where an attractive, rugged pushbutton switch is required.

Attractive dome style button

2 button heights

Double break or shorting bar, momentary action

Threaded body or snap-in panel mounting

Withstands extreme shock and vibration

Sealed to IP64 or IP68

UL recognised and CSA certified

RoHS/WEEE/Reach compliant

OTTO[®]

SWITCH..it with

CONSOLIDATE..it

SIMPLIFYING PROCUREMENT

Not only can we SOURCE..it but also CONSOLIDATE..it with IS-Rayfast. Our aim is to solve all your requirements in one easy package. Wire, connectors, heat-shrink tubing, sleeving, cable management, identification methods and systems, plus relays and contactors, are just a small selection of high performance products we supply alongside our flexible inventory management and value added services

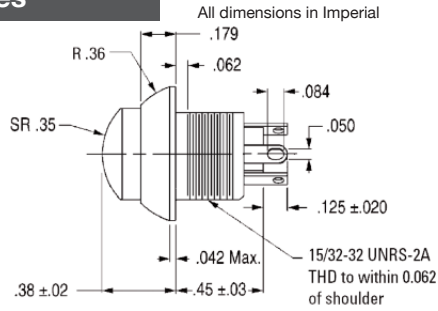
Bespoke Designs

Contact us

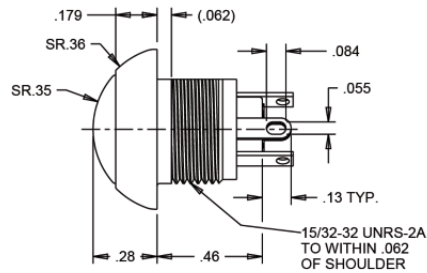


IS Rayfast

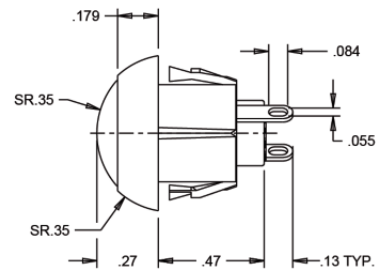
Choice of Styles



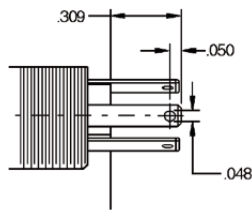
Raised Dome Button Style



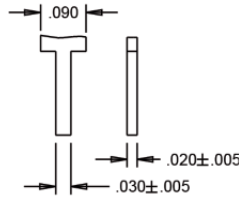
Flush Dome Button Style



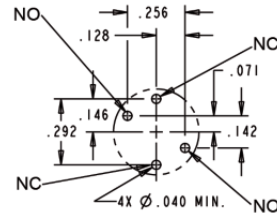
***Snap-In case**
(PC Terminals Shown)
NON-STOCKED ITEM



Quick Connect



PC Pin Terminal Detail
(PC Terminals Shown)



Component Side
PC Mounting Pattern
(As viewed from switch bottom)

Part Numbering Code

Stock Profile

P9-11112*

P9-11312*

P9-21112*

P9-11112*

P9-21312*

P9-11212*

P9-21212*

P9-11112*W

P9-11312*W

P9-21112*W

P9-11112*W

P9-21312*W

P9-11212*W

P9-21212*W

P9 - 2 1 2 1 2 2 W

Part numbering example

Add W suffix for watertight to IP68S version Will include panel gasket.
Leave blank if IP64 required

Button Colour

All colours stocked
1. Red • 2. Black • 3. Orange • 4. Yellow • 5. Green • 6. Blue • 7. Violet • 8. Grey • 9. White

Bezel Colour

1. Red • 2. Black (stocked) • 3. Orange • 4. Yellow • 5. Green • 6. Blue • 7. Violet • 8. Grey • 9. White

Switch Action

1. Standard Snap-Action (stocked) • 2. Low Force Snap-Action

Circuit Form

1. N.O. • 2. N.C. • 3. Two Circuit

Terminal Style

1. Solder (stocked) • 2. PC Pin • 3. Quick Connect

Button & Case Style

1. Flush Dome and Threaded Case • 2. Raised Dome and Threaded case • 3. Flush Dome and Snap-In Case • 4. Raised Dome and Snap-In Case

WIRE..it SWITCH..it PROTECT..it MANAGE..it IDENTIFY..it PROTECT..it RELAY..it CONNECT..it



2 Lydiard Fields, Swindon, Wiltshire, SN5 8UB, UK
Tel: +44(0) 1793 616700 • Fax: +44(0) 1793 644304
uksales@is-rayfast.com • export@is-rayfast.com

www.is-rayfast.com

